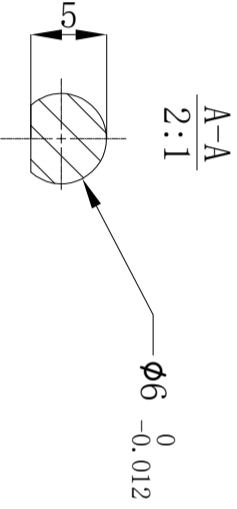
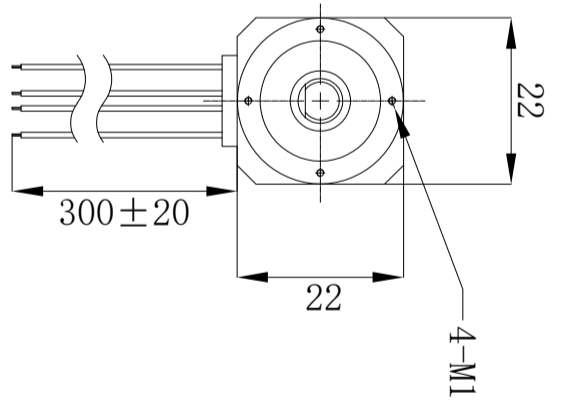
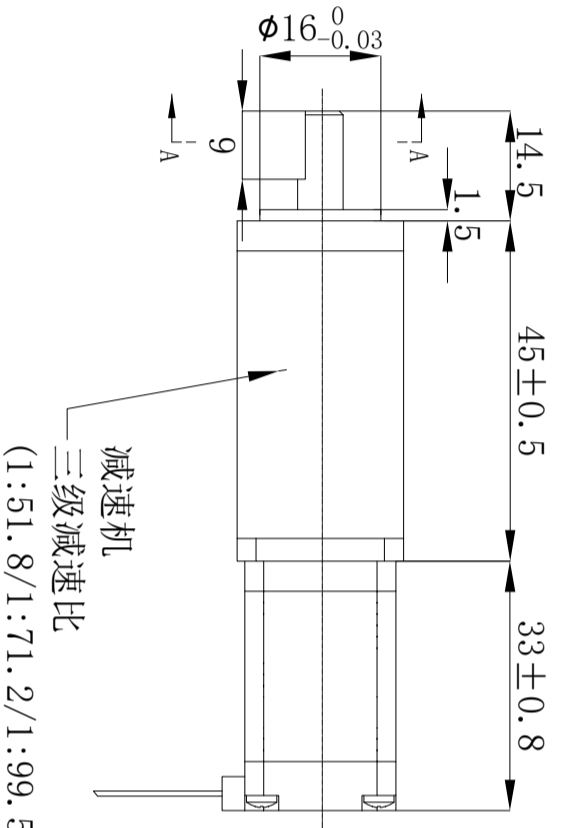
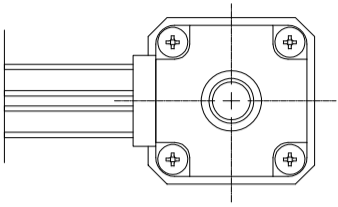
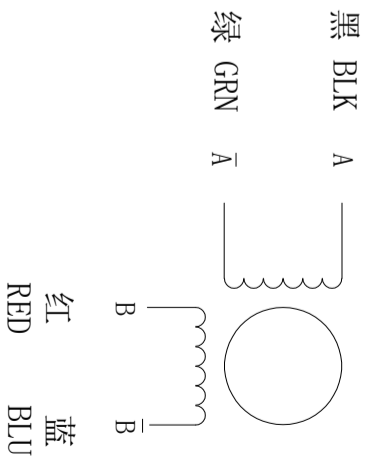


符合ROHS指令要求
CONFORM TO ROHS INSTRUCTIONS



Wiring Diagram/接线图



励磁顺序(2相励磁)
EXCITING SEQUENCE(TWO PHASES)

STEP	A	B	Ā	B̄
1	+	+	-	-
2	-	+	+	-
3	-	-	+	+
4	+	+	-	+

电器特性参数/ELECTRICAL PARAMETER

步进角	STEP ANGEL	1.8° ±5%
相数	PHASES	2
额定电压	RATED VOLTAGE	2.6 V
额定电流	RATED CURRENT	0.4 A
电阻	RESISTANCE	6.5 ohm±10% AT 20° C
电感	INDUCTANCE	2.2 mH±20% AT 1k Hz, 1V RMS
保持力矩	HOLDING TORQUE	0.2N. m
运行力矩(---PPS)		--- MIN.
RUNNING TORQUE(AT ---PPS)		(24VDC, RATED CURRENT, FULL STEP)
绝缘耐压	DIELECTRIC STRENGTH	500V AC 1 MINUTIE
绝缘电阻	INSULATION RESISTANCE	100 MΩ MIN
绝缘等级	INSULATION CLASS	B
温度上升	TEMPERATURE RISE	80K MAX. (SEE NOTE 2)
转子惯量	ROTOR INERTIA	≈2.9g. cm ²
重量	WEIGHT	APPROX. 70g
最大轴向跳动	MAXIMUM AXIAL RUNOUT TOLERANCE	0.075mm (负载90g)
最大径向跳动	MAXIMUM RADIAL RUNOUT TOLERANCE	0.025mm (负载42g)
环境温度	AMBIENT TEMP	0°C-----+50°C
环境湿度	AMBIENT HUM	20%-----90%

CONFIRMED&ACCEPTED BY CUSTOMER

COMPANY CHOP&SIGNATURE (盖章&签名)

一般公差
TOLERANCE ±0.3/±3°

版本
REV.

年月日
DATE

变更内容
REVISIONS

设计
BY

备注
NOTE

型号/MODEL
20H233-0404AG

设计/DESIGNED

比例
SCALE 1:1

品名
TITLE

步进电机规格书
STEPPING MOTOR SPECIFICATION

三视图
THIRD ANGLE PROJECTION

审核/CHECKED

上海四横电机制造有限公司

页
SHEET

1/1